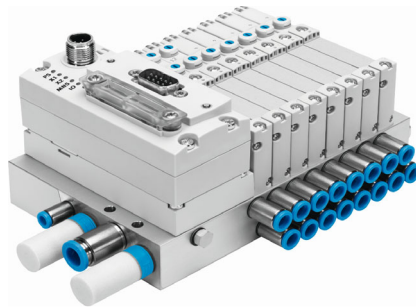
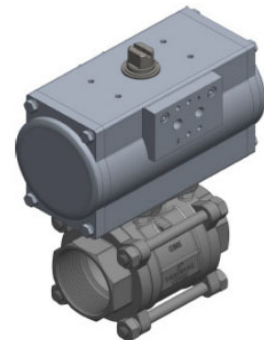
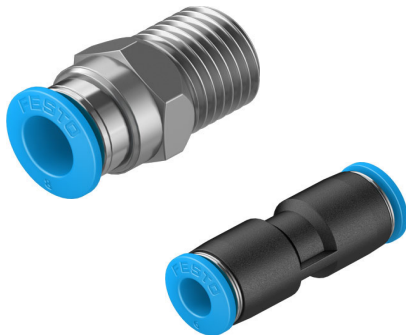


Optimal solutions, faster



# Festo Selection Guide 2024



## Version 1.5

### MELBOURNE

2/2 Sibthorpe Street  
Braeside VIC 3195  
Ph: (03) 9587 1233  
sales@remtron.com.au

### GIPPSLAND

1/29-31 Eastern Road  
Traralgon VIC 3844  
Ph: (03) 5192 5000  
gippslandsales@remtron.com.au

### ALBURY

444 Wilson Street  
Albury NSW 2640  
Ph: (02) 6043 8400  
alburysales@remtron.com.au

### TASMANIA

5/2 Cessna Way Cambridge  
Hobart TAS 7170  
Ph: (03) 6422 5000  
remtrontasmania@remtron.com.au

### ADELAIDE

22 Marlow Road  
Keswick SA 5035  
Ph: (08) 5192 5000  
sasales@remtron.com.au

### BRISBANE

2/3273 Logan Road  
Underwood QLD 4119  
Ph: (07) 3208 7931  
qldsales@remtron.com.au

### TOWNSVILLE

2/44-46 Carmel Street  
Garbutt QLD 4814  
Ph: (07) 4725 4499  
qldsales@remtron.com.au

## Straight Fittings

Part Number	Item Code	Description	Thread Size BSP	Tube Size
QSM-M5-4	153304	Straight fitting	M5	4mm
QSM-M5-6	153306	Straight fitting	M5	6mm
QS-1/8-4	153001	Straight fitting	1/8"	4mm
QS-1/8-6	153002	Straight fitting	1/8"	6mm
QS-1/8-8	153004	Straight fitting	1/8"	8mm
QS-1/8-10	190643	Straight fitting	1/8"	10mm
QS-1/4-4	190644	Straight fitting	1/4"	4mm
QS-1/4-6	153003	Straight fitting	1/4"	6mm
QS-1/4-8	153005	Straight fitting	1/4"	8mm
QS-1/4-10	153007	Straight fitting	1/4"	10mm
QS-1/4-12	164980	Straight fitting	1/4"	12mm
QS-3/8-6	190645	Straight fitting	3/8"	6mm
QS-3/8-8	153006	Straight fitting	3/8"	8mm
QS-3/8-10	153008	Straight fitting	3/8"	10mm
QS-3/8-12	153009	Straight fitting	3/8"	12mm
QS-3/8-16	164957	Straight fitting	3/8"	16mm
QS-1/2-10	190646	Straight fitting	1/2"	10mm
QS-1/2-12	153010	Straight fitting	1/2"	12mm
QS-1/2-16	153011	Straight fitting	1/2"	16mm



## Elbow Fittings

Part Number	Item Code	Description	Thread Size BSP	Tube Size
QSML-M5-4	153333	Elbow fitting	M5	4mm
QSML-M5-6	153335	Elbow fitting	M5	6mm
QSL-1/8-4	153045	Elbow fitting	1/8"	4mm
QSL-1/8-6	153046	Elbow fitting	1/8"	6mm
QSL-1/8-8	153048	Elbow fitting	1/8"	8mm
QSL-1/8-10	190658	Elbow fitting	1/8"	10mm
QSL-1/4-4	190659	Elbow fitting	1/4"	4mm
QSL-1/4-6	153047	Elbow fitting	1/4"	6mm
QSL-1/4-8	153049	Elbow fitting	1/4"	8mm
QSL-1/4-10	153051	Elbow fitting	1/4"	10mm
QSL-1/4-12	164981	Elbow fitting	1/4"	12mm
QSL-3/8-6	190660	Elbow fitting	3/8"	6mm
QSL-3/8-8	153050	Elbow fitting	3/8"	8mm
QSL-3/8-10	153052	Elbow fitting	3/8"	10mm
QSL-3/8-12	153053	Elbow fitting	3/8"	12mm
QSL-3/8-16	164958	Elbow fitting	3/8"	16mm
QSL-1/2-10	190661	Elbow fitting	1/2"	10mm
QSL-1/2-12	153054	Elbow fitting	1/2"	12mm
QSL-1/2-16	153055	Elbow fitting	1/2"	16mm



## Straight Joiners

Part Number	Item Code	Description	Tube Size
QS-4	153031	Straight Joiner	4mm
QS-6	153032	Straight Joiner	6mm
QS-8	153033	Straight Joiner	8mm
QS-10	153034	Straight Joiner	10mm
QS-12	153035	Straight Joiner	12mm
QS-16	153036	Straight Joiner	16mm



## Elbow Joiners

Part Number	Item Code	Description	Tube Size
QSL-4	153070	Elbow Joiner	4mm
QSL-6	153071	Elbow Joiner	6mm
QSL-8	153072	Elbow Joiner	8mm
QSL-10	153073	Elbow Joiner	10mm
QSL-12	153074	Elbow Joiner	12mm
QSL-16	153075	Elbow Joiner	16mm



## Tee Joiners

Part Number	Item Code	Description	Tube Size
QST-4	153128	Tee Joiner	4mm
QST-6	153129	Tee Joiner	6mm
QST-8	153130	Tee Joiner	8mm
QST-10	153131	Tee Joiner	10mm
QST-12	153132	Tee Joiner	12mm
QST-16	153133	Tee Joiner	16mm



## Tee Joiners

Part Number	Item Code	Description	Tube Size
QSY-4	153148	Y Joiner	4mm
QSY-6	153149	Y Joiner	6mm
QSY-8	153150	Y Joiner	8mm
QSY-10	153151	Y Joiner	10mm
QSY-12	153152	Y Joiner	12mm
QSY-16	130609	Y Joiner	16mm



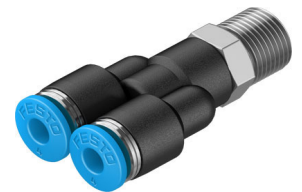
## Threaded Tee Fittings

Part Number	Item Code	Description	Thread Size BSP	Tube Size
QST-1/8-4	153106	Threaded Tee	1/8"	4mm
QST-1/8-6	153107	Threaded Tee	1/8"	6mm
QST-1/8-8	153109	Threaded Tee	1/8"	8mm
QST-1/8-10	190667	Threaded Tee	1/8"	10mm
QST-1/4-4	190668	Threaded Tee	1/4"	4mm
QST-1/4-6	153108	Threaded Tee	1/4"	6mm
QST-1/4-8	153110	Threaded Tee	1/4"	8mm
QST-1/4-10	153112	Threaded Tee	1/4"	10mm
QST-1/4-12	190669	Threaded Tee	1/4"	12mm
QST-3/8-6	190670	Threaded Tee	3/8"	6mm
QST-3/8-8	153111	Threaded Tee	3/8"	8mm
QST-3/8-10	153113	Threaded Tee	3/8"	10mm
QST-3/8-12	153114	Threaded Tee	3/8"	12mm
QST-3/8-16	164959	Threaded Tee	3/8"	16mm
QST-1/2-10	190672	Threaded Tee	1/2"	10mm
QST-1/2-12	153115	Threaded Tee	1/2"	12mm
QST-1/2-16	153116	Threaded Tee	1/2"	16mm



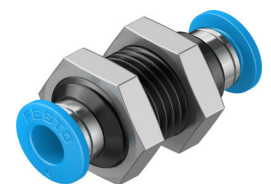
## Threaded Y Fittings

Part Number	Item Code	Description	Thread Size BSP	Tube Size
QSY-1/8-4	153138	Threaded Y	1/8"	4mm
QSY-1/8-6	153139	Threaded Y	1/8"	6mm
QSY-1/8-8	153141	Threaded Y	1/8"	8mm
QSY-1/4-4	190675	Threaded Y	1/4"	4mm
QSY-1/4-6	153140	Threaded Y	1/4"	6mm
QSY-1/4-8	153142	Threaded Y	1/4"	8mm
QSY-1/4-10	153144	Threaded Y	1/4"	10mm
QSY-3/8-8	153143	Threaded Y	3/8"	8mm
QSY-3/8-10	153145	Threaded Y	3/8"	10mm
QSY-3/8-12	153146	Threaded Y	3/8"	12mm
QSY-1/2-10	133196	Threaded Y	1/2"	10mm
QSY-1/2-12	153147	Threaded Y	1/2"	12mm



## Bulkhead Fittings

Part Number	Item Code	Description	Tube Size
QSS-4	153157	Bulkhead fitting	4mm
QSS-6	153158	Bulkhead fitting	6mm
QSS-8	153159	Bulkhead fitting	8mm
QSS-10	153160	Bulkhead fitting	10mm
QSS-12	153161	Bulkhead fitting	12mm



## Straight Fittings

Part Number	Item Code	Description	Thread Size BSP	Tube Size
NPQH-D-M5-Q4-P10	578334	Straight fitting	M5	4mm
NPQH-D-M5-Q6-P10	578335	Straight fitting	M5	6mm
NPQH-D-G18-Q4-P10	578338	Straight fitting	1/8"	4mm
NPQH-D-G18-Q6-P10	578339	Straight fitting	1/8"	6mm
NPQH-D-G18-Q8-P10	578340	Straight fitting	1/8"	8mm
NPQH-D-G14-Q6-P10	578341	Straight fitting	1/4"	6mm
NPQH-D-G14-Q8-P10	578342	Straight fitting	1/4"	8mm
NPQH-D-G14-Q10-P10	578343	Straight fitting	1/4"	10mm
NPQH-D-G14-Q12-P10	578344	Straight fitting	1/4"	12mm
NPQH-D-G38-Q8-P10	578345	Straight fitting	3/8"	8mm
NPQH-D-G38-Q10-P10	578346	Straight fitting	3/8"	10mm
NPQH-D-G38-Q12-P10	578347	Straight fitting	3/8"	12mm
NPQH-D-G12-Q10-P10	578349	Straight fitting	1/2"	10mm
NPQH-D-G12-Q12-P10	578350	Straight fitting	1/2"	12mm



## Elbow Fittings

Part Number	Item Code	Description	Thread Size BSP	Tube Size
NPQH-L-M5-Q4-P10	578276	Elbow fitting	M5	4mm
NPQH-L-M5-Q6-P10	578277	Elbow fitting	M5	6mm
NPQH-L-G18-Q4-P10	578280	Elbow fitting	1/8"	4mm
NPQH-L-G18-Q6-P10	578281	Elbow fitting	1/8"	6mm
NPQH-L-G18-Q8-P10	578282	Elbow fitting	1/8"	8mm
NPQH-L-G14-Q6-P10	578283	Elbow fitting	1/4"	6mm
NPQH-L-G14-Q8-P10	578284	Elbow fitting	1/4"	8mm
NPQH-L-G14-Q10-P10	578285	Elbow fitting	1/4"	10mm
NPQH-L-G14-Q12-P10	578286	Elbow fitting	1/4"	12mm
NPQH-L-G38-Q8-P10	578287	Elbow fitting	3/8"	8mm
NPQH-L-G38-Q10-P10	578288	Elbow fitting	3/8"	10mm
NPQH-L-G38-Q12-P10	578289	Elbow fitting	3/8"	12mm
NPQH-L-G12-Q10-P10	578291	Elbow fitting	1/2"	10mm
NPQH-L-G12-Q12-P10	578292	Elbow fitting	1/2"	12mm



## Straight Joiners

Part Number	Item Code	Description	Tube Size
NPQH-D-Q4-E-P10	578323	Straight Joiner	4mm
NPQH-D-Q6-E-P10	578324	Straight Joiner	6mm
NPQH-D-Q8-E-P10	578325	Straight Joiner	8mm
NPQH-D-Q10-E-P10	578326	Straight Joiner	10mm
NPQH-D-Q12-E-P10	578327	Straight Joiner	12mm



## Elbow Joiners

Part Number	Item Code	Description	Tube Size
NPQH-L-Q4-E-P10	578270	Elbow Joiner	4mm
NPQH-L-Q6-E-P10	578271	Elbow Joiner	6mm
NPQH-L-Q8-E-P10	578272	Elbow Joiner	8mm
NPQH-L-Q10-E-P10	578273	Elbow Joiner	10mm
NPQH-L-Q12-E-P10	578274	Elbow Joiner	12mm



## Tee Joiners

Part Number	Item Code	Description	Tube Size
NPQH-T-Q4-E-P10	578380	Tee Joiner	4mm
NPQH-T-Q6-E-P10	578381	Tee Joiner	6mm
NPQH-T-Q8-E-P10	578382	Tee Joiner	8mm
NPQH-T-Q10-E-P10	578383	Tee Joiner	10mm
NPQH-T-Q12-E-P10	578384	Tee Joiner	12mm



## Tee Joiners

Part Number	Item Code	Description	Tube Size
NPQH-Y-Q6-E-P10	578410	Y Joiner	6mm
NPQH-Y-Q8-E-P10	578411	Y Joiner	8mm
NPQH-Y-Q10-E-P10	578412	Y Joiner	10mm



## Threaded Tee Fittings

Part Number	Item Code	Description	Thread Size BSP	Tube Size
NPQH-T-M5-Q4-P10	578390	Threaded Tee	M5	4mm
NPQH-T-M5-Q6-P10	578391	Threaded Tee	M5	6mm
NPQH-T-G18-Q4-P10	578392	Threaded Tee	1/8"	4mm
NPQH-T-G18-Q6-P10	578393	Threaded Tee	1/8"	6mm
NPQH-T-G18-Q8-P10	578394	Threaded Tee	1/8"	8mm
NPQH-T-G14-Q6-P10	578395	Threaded Tee	1/4"	6mm
NPQH-T-G14-Q8-P10	578396	Threaded Tee	1/4"	8mm
NPQH-T-G14-Q10-P10	578397	Threaded Tee	1/4"	10mm
NPQH-T-G14-Q12-P10	578398	Threaded Tee	1/4"	12mm
NPQH-T-G38-Q8-P10	578399	Threaded Tee	3/8"	8mm
NPQH-T-G38-Q10-P10	578400	Threaded Tee	3/8"	10mm
NPQH-T-G38-Q12-P10	578401	Threaded Tee	3/8"	12mm
NPQH-T-G12-Q10-P10	578402	Threaded Tee	1/2"	10mm
NPQH-T-G12-Q12-P10	578403	Threaded Tee	1/2"	12mm



## Bulkhead Fittings

Part Number	Item Code	Description	OD Tube Size
NPQH-H-Q4-E-P10	578299	Bulkhead fitting	4mm
NPQH-H-Q6-E-P10	578300	Bulkhead fitting	6mm
NPQH-H-Q8-E-P10	578301	Bulkhead fitting	8mm
NPQH-H-Q10-E-P10	578302	Bulkhead fitting	10mm
NPQH-H-Q12-E-P10	578303	Bulkhead fitting	12mm



## Stainless Steel NPQR Fittings Available

Call us for Pricing & Availability

## Blanking Plugs

Part Number	Item Code	Description	Thread Size BSP
B-1/8	3568	Blanking Plug	1/8"
B-1/4	3569	Blanking Plug	1/4"
B-3/8	3570	Blanking Plug	3/8"
B-1/2	3571	Blanking Plug	1/2"
B-3/4	3572	Blanking Plug	3/4"
B-1	5763	Blanking Plug	1"



## Threaded Sleeve

Part Number	Item Code	Description	Thread Size BSP
NPFC-S-2G18-F	8030291	Female Socket	1/8"
NPFC-S-2G14-F	8030292	Female Socket	1/4"
NPFC-S-2G38-F	8030293	Female Socket	3/8"
NPFC-S-2G12-F	8030294	Female Socket	1/2"



## Double Nipple

Part Number	Item Code	Description	Thread Size BSP
NPFC-D-2G18-M	8030271	Double Nipple	1/8"
NPFC-D-2G14-M	8030272	Double Nipple	1/4"
NPFC-D-2G38-M	8030275	Double Nipple	3/8"
NPFC-D-2G12-M	8030277	Double Nipple	1/2"



## Reducing Nipple

Part Number	Item Code	Description	Thread Size 1	Thread Size 2
NPFC-D-G18-G14-M	8030270	Reducing Nipple	1/8"	1/4"
NPFC-D-G14-G38-M	8030273	Reducing Nipple	1/4"	3/8"
NPFC-D-G14-G12-M	8030274	Reducing Nipple	1/4"	1/2"
NPFC-D-G38-G12-M	8030276	Reducing Nipple	3/8"	1/2"



## Double Nipple

Part Number	Item Code	Description	Thread Size Outer	Thread Size 2 Inner
NPFC-R-G14-G18-MF	8030308	Double Nipple	1/4"	1/8"
NPFC-R-G38-G14-MF	8030310	Double Nipple	3/8"	1/4"
NPFC-R-G12-G14-MF	8030311	Double Nipple	1/2"	1/4"
NPFC-R-G12-G38-MF	8030312	Double Nipple	1/2"	3/8"



## Function Fittings

### Inline Flow Control Valves

Part Number	Item Code	Description	OD Tube Size
GR-QS-4	193967	Inline Flow Control	4mm
GR-QS-6	193969	Inline Flow Control	6mm
GR-QS-8	193970	Inline Flow Control	8mm



### Check Valves

Part Number	Item Code	Description	OD Tube Size
H-QS-4	153462	Inline Check Valve	4mm
H-QS-6	153463	Inline Check Valve	6mm
H-QS-8	153464	Inline Check Valve	8mm
H-QS-10	153465	Inline Check Valve	10mm
H-QS-12	153466	Inline Check Valve	12mm



### In Line On/Off Valve 2/2

Part Number	Item Code	Description	OD Tube Size
HE-2-QS-6	153467	On/Off Valve Inline	6mm
HE-2-QS-8	153468	On/Off Valve Inline	8mm
HE-2-QS-10	153469	On/Off Valve Inline	10mm
HE-2-QS-12	153470	On/Off Valve Inline	12mm



### In Line On/Off Valve with Exhaust 3/2

Part Number	Item Code	Description	OD Tube Size
HE-3-QS-6	153475	On/Off Valve Inline Exhaust	6mm
HE-3-QS-8	153476	On/Off Valve Inline Exhaust	8mm
HE-3-QS-10	153477	On/Off Valve Inline Exhaust	10mm
HE-3-QS-12	153478	On/Off Valve Inline Exhaust	12mm





## Silencers Plastic

Part Number	Item Code	Description	Thread Size
U-1/8	2307	Silencer	1/8"
U-1/4	2316	Silencer	1/4"
U-3/8	2309	Silencer	3/8"
U-1/2	2310	Silencer	1/2"
U-3/4	2311	Silencer	3/4"
U-1	2312	Silencer	1"



## Silencers Aluminium

Part Number	Item Code	Description	Thread Size
U-1/8-B	6841	Silencer	1/8"
U-1/4-B	6842	Silencer	1/4"
U-3/8-B	6843	Silencer	3/8"
U-1/2-B	6844	Silencer	1/2"
U-3/4-B	6845	Silencer	3/4"
U-1-B	151990	Silencer	1"



## Exhaust Flow Control

Part Number	Item Code	Description	Thread Size
GRU-1/8-B	9516	Silencer	1/8"
GRU-1/4-B	9517	Silencer	1/4"
GRU-3/8-B	9518	Silencer	3/8"
GRU-1/2-B	9519	Silencer	1/2"



## Brass Silencers Short Head

Part Number	Item Code	Description	Thread Size
AMTE-M-H-M5	1206621	Silencer	M5
AMTE-M-H-G18	1206622	Silencer	1/8"
AMTE-M-H-G14	1206623	Silencer	1/4"
AMTE-M-H-G38	1206624	Silencer	3/8"
AMTE-M-H-G12	1206625	Silencer	1/2"



## Brass Silencers Long Head

Part Number	Item Code	Description	Thread Size
AMTE-M-LH-M5	1205858	Silencer	M5
AMTE-M-LH-G18	1205860	Silencer	1/8"
AMTE-M-LH-G14	1205861	Silencer	1/4"
AMTE-M-LH-G38	1205862	Silencer	3/8"
AMTE-M-LH-G12	1205863	Silencer	1/2"



## Quick Coupling Socket

Part Number	Item Code	Description	Thread Size	
NPHS-D6-P-G14	8059267	Coupling Socket	1/4"	Male
NPHS-D6-P-G12	8059269	Coupling Socket	1/2"	Male
NPHS-D6-P-G14F	8059271	Coupling Socket	1/4"	Female
NPHS-D6-P-G12F	8059273	Coupling Socket	1/2"	Female



## Quick Coupling Plug

Part Number	Item Code	Description	Thread Size	
NPHS-S6-M-G14	8059258	Coupling Plug	1/4"	Male
NPHS-S6-M-G12	8059260	Coupling Plug	1/2"	Male
NPHS-S6-M-G14F	8059262	Coupling Plug	1/4"	Female
NPHS-S6-M-G12F	8059264	Coupling Plug	1/2"	Female



# Airline

## Tubing

Part Number	Item Code	Description	Colour	Tube Size
PUN-H-4X0,75-BL	197383	Plastic Tubing	Blue	4mm
PUN-H-4X0,75-SW	197390	Plastic Tubing	Black	4mm
PUN-H-6X1-BL	197384	Plastic Tubing	Blue	6mm
PUN-H-6X1-SW	197391	Plastic Tubing	Black	6mm
PUN-H-8X1,25-BL	197385	Plastic Tubing	Blue	8mm
PUN-H-8X1,25-SW	197392	Plastic Tubing	Black	8mm
PUN-H-10X1,5-BL	197386	Plastic Tubing	Blue	10mm
PUN-H-10X1,5-SW	197393	Plastic Tubing	Black	10mm
PUN-H-12X2-BL	197387	Plastic Tubing	Blue	12mm
PUN-H-12X2-SW	197394	Plastic Tubing	Black	12mm
PUN-H-16X2,5-BL	197388	Plastic Tubing	Blue	16mm
PUN-H-16X2,5-SW	197395	Plastic Tubing	Black	16mm



\*\* Additional Colours available: Red, Yellow, Green, Silver, Natural & Transluents colours on request

## Tubing 25m Box Only

Part Number	Item Code	Description	Colour	Tube Size
PUN-H-6-BL-25-CB	610623	Plastic Tubing	Blue	6mm
PUN-H-6-SW-25-CB	610636	Plastic Tubing	Black	6mm
PUN-H-8-BL-25-CB	610625	Plastic Tubing	Blue	8mm
PUN-H-8-SW-25-CB	610638	Plastic Tubing	Black	8mm

## Accessories

Part Number	Item Code	Description
ZRS	7658	Pipe/tube cutter
ZRS Blades (10 Pack)	218606	Spare Razor Blades



## Filter Regulators 0.5...12 Bar 40µm and 5µm Plastic Bowl Guard

Part Number	Item Code	Description	Thread Size	Drain
MS4-LFR-1/8-D7-ERM-AS	529172	Filter/Regulator 40µm	1/8" BSP	Manual
MS4-LFR-1/8-D7-ERV-AS	529174	Filter/Regulator 40µm	1/8" BSP	Auto
MS4-LFR-1/4-D7-ERM-AS	529156	Filter/Regulator 40µm	1/4" BSP	Manual
MS4-LFR-1/4-D7-ERV-AS	529158	Filter/Regulator 40µm	1/4" BSP	Auto
MS6-LFR-3/8-D7-ERM-AS	529228	Filter/Regulator 40µm	3/8" BSP	Manual
MS6-LFR-3/8-D7-ERV-AS	529230	Filter/Regulator 40µm	3/8" BSP	Auto
MS6-LFR-1/2-D7-ERM-AS	529188	Filter/Regulator 40µm	1/2" BSP	Manual
MS6-LFR-1/2-D7-ERV-AS	529190	Filter/Regulator 40µm	1/2" BSP	Auto
MS4-LFR-1/8-D7-CRM-AS	529168	Filter/Regulator 5µm	1/8" BSP	Manual
MS4-LFR-1/8-D7-CRV-AS	529170	Filter/Regulator 5µm	1/8" BSP	Auto
MS4-LFR-1/4-D7-CRM-AS	529152	Filter/Regulator 5µm	1/4" BSP	Manual
MS4-LFR-1/4-D7-CRV-AS	529154	Filter/Regulator 5µm	1/4" BSP	Auto
MS6-LFR-3/8-D7-CRM-AS	529224	Filter/Regulator 5µm	3/8" BSP	Manual
MS6-LFR-3/8-D7-CRV-AS	529226	Filter/Regulator 5µm	3/8" BSP	Auto
MS6-LFR-1/2-D7-CRM-AS	529184	Filter/Regulator 5µm	1/2" BSP	Manual
MS6-LFR-1/2-D7-CRV-AS	529186	Filter/Regulator 5µm	1/2" BSP	Auto



## In-Line Filters 5µm, 1µm, 0.01µm and Active Carbon Plastic Bowl Guard

Part Number	Item Code	Description	Thread Size	Drain
MS4-LF-1/8-CRM	529403	Filter, 5µm	1/8" BSP	Manual
MS4-LF-1/8-CRV	529405	Filter, 5µm	1/8" BSP	Auto
MS4-LF-1/4-CRM	529395	Filter, 5µm	1/4" BSP	Manual
MS4-LF-1/4-CRV	529397	Filter, 5µm	1/4" BSP	Auto
MS6-LF-3/8-CRM	529639	Filter, 5µm	3/8" BSP	Manual
MS6-LF-3/8-CRV	529641	Filter, 5µm	3/8" BSP	Auto
MS6-LF-1/2-CRM	529607	Filter, 5µm	1/2" BSP	Manual
MS6-LF-1/2-CRV	529609	Filter, 5µm	1/2" BSP	Auto
MS4-LFM-1/8-BRM	529465	Fine Filter, 1µm	1/8" BSP	Manual
MS4-LFM-1/8-ARM	529463	Fine Filter, 0.01µm	1/8" BSP	Manual
MS4-LFM-1/4-BUV	535766	Fine Filter, 1µm	1/4" BSP	Auto
MS4-LFM-1/4-AUV	535786	Fine Filter, 0.01µm	1/4" BSP	Auto
MS6-LFM-3/8-BRM	529675	Fine Filter, 1µm	3/8" BSP	Manual
MS6-LFM-3/8-ARM	529671	Fine Filter, 0.01µm	3/8" BSP	Manual
MS6-LFM-1/2-BUV	529661	Fine Filter, 1µm	1/2" BSP	Auto
MS6-LFM-1/2-AUV	529657	Fine Filter, 0.01µm	1/2" BSP	Auto



## Active Carbon Plastic Bowl Guard

Part Number	Item Code	Description	Thread Size	Drain
MS4-LFX-1/4-R	529467	AC Filter, 0,003µm	1/4" BSP	N/A
MS6-LFX-1/2-R	529679	AC Filter, 0,003µm	1/2" BSP	N/A

## Regulators 0.5...12 Bar with Pressure Gauge

Part Number	Item Code	Description	Thread Size
MS4-LR-1/8-D7-AS	529425	Regulator	1/8"
MS4-LR-1/4-D7-AS	529419	Regulator	1/4"
MS6-LR-3/8-D7-AS	530005	Regulator	3/8"
MS6-LR-1/2-D7-AS	529993	Regulator	1/2"



## Lubricators with Plastic Bowl Guard

Part Number	Item Code	Description	Thread Size
MS4-LOE-1/8-R	529413	Lubricator	1/8"
MS4-LOE-1/4-R	529411	Lubricator	1/4"
MS6-LOE-3/8-R	529783	Lubricator	3/8"
MS6-LOE-1/2-R	529775	Lubricator	1/2"



## Lubrication Oil

Part Number	Item Code	Description
OFSW-32	152811	1L Oil



## Manual On/Off Valve

Part Number	Item Code	Description	Thread Size
MS4-EM1-1/4-S	541259	Isolation Valve	1/4"
MS6-EM1-1/2-S	541268	Isolation Valve	1/2"



## Electronic On/Off Valve

Part Number	Item Code	Description	Thread Size
MS4-EE-1/4-10V24-S	542598	Isolation Valve	1/4"
MS6-EE-1/2-10V24-S	542602	Isolation Valve	1/2"
MSSD-EB	151687	Plug Socket to Suit	



## Branching Module

Part Number	Item Code	Description	Thread Size
MS4-FRM-1/4	529555	Isolation Valve	1/4"
MS6-FRM-1/2	529853	Isolation Valve	1/2"



## Safety Dump Valve CAT 3 or CAT 4

Part Number	Item Code	Description	Thread Size
MS6-SV-1/2-D-10V24P-2M12-SO-AG (CAT 3)	8038491	Safety Valve	1/2"
NEBU-M12G5-K-5-LE4 Connection Cables	x4 Required 541328	M12 Cables	
MS6-SV-1/2-E-10V24-SO-AG (CAT 4)	548717	Safety Valve	1/2"
NECA-S1G9-P9-MP3 Multipin socket	x1 Required 552703	Plug Socket	



## Air Service Combinations Available on Request.



**\*\* All configurations can be built locally. Contact your Remtron branch for more information**

## Accessories - Mounting Brackets Individual Use

Part Number	Item Code	Description
MS4-WR	526064	Wall Mount Bracket
MS4-WRS	532187	Hex Nut to suit MS4-WR
MS4-WR-B	8149680	Wall Mount Bracket & Hex Nut
MS6-WR	526075	Wall Mount Bracket
MS6-WRS	532188	Hex Nut to suit MS6-WR
MS6-WR-B	8149681	Wall Mount Bracket & Hex Nut



## Accessories - Mounting Bracket Individual Use

Part Number	Item Code	Description
MS4-WB	532185	Rear Mounting Bracket
MS6-WB	532196	Rear Mounting Bracket



## Accessories - Mounting Bracket Combination Use

Part Number	Item Code	Description
MS4-WP	532184	Mounting Bracket Wall
MS4-MV	8119201	Joining Bracket
MS6-WP	532195	Mounting Bracket Wall
MS6-MV1	8119204	Joining Bracket
MS6-WPB	526074	Large Mounting Bracket Wall



## Accessories - Gauges

Part Number	Item Code	Description	Thread Size
MA-50-16-1/4	356759	Rear Entry Gauge	1/4"
MS4/6-A4.ERS	673591	MS4 Adaptor for Analogue Gauge	
MS4/6-A8.ERS	673592	MS6 Adaptor for Analogue Gauge	
SPAU-P10R-MS4-F-L-PNLK-PNVBA-M8D	8035302	MS4 Digital Pressure Sensor PNP	
SPAU-P10R-MS6-F-L-PNLK-PNVBA-M8D	8035303	MS6 Digital Pressure Sensor PNP	
NEBU-M8G4-K-5-LE4	541343	M8 Connecting Cable for Pressure Sensor 5m	



Part Number	Item Code	Description	Size
PEV-1/4-B	10773	Pressure Switch for Branching Module	MS4/MS6
ESK-1/4-1/4	151521	Adaptor Fitting	MS4
ESK-1/4-1/2	534153	Adaptor Fitting	MS6



## Solenoid Valves without coil, internal pilot air supply & detenting manual override

Part Number	Item Code	Description	Thread Size
VUUS-L25-M32C-MD-G14-F8	575473	3/2 NC Solenoid Valve	G1/4
VUUS-L25-M32U-MD-G14-F8	575488	3/2 NO Solenoid Valve	G1/4
VUUS-L25-M52-MD-G14-F8	575509	5/2 Single Solenoid Valve	G1/4
VUUS-L25-B52-D-G14-F8	575516	5/2 Double Solenoid Valve	G1/4
VUUS-L25-P53C-MD-G14-F8	575523	5/3 Closed Sol Valve	G1/4
VUUS-L25-P53E-MD-G14-F8	575537	5/3 Exhausted Sol Valve	G1/4
VUUS-L25-P53U-MD-G14-F8	575530	5/3 Pressurised Sol Valve	G1/4
VUUS-L30-M32C-MD-G38-F8	575566	3/2 NC Solenoid Valve	G-3/8
VUUS-L30-M32U-MD-G38-F8	575581	3/2 NO Solenoid Valve	G-3/8
VUUS-L30-M52-MD-G38-F8	575602	5/2 Single Solenoid Valve	G-3/8
VUUS-L30-B52-D-G38-F8	575609	5/2 Double Solenoid Valve	G-3/8
VUUS-L30-P53C-MD-G38-F8	575616	5/3 Closed Sol Valve	G-3/8
VUUS-L30-P53E-MD-G38-F8	575630	5/3 Exhausted Sol Valve	G-3/8
VUUS-L30-P53U-MD-G38-F8	575623	5/3 Pressurised Sol Valve	G-3/8



## Solenoid coils

Part Number	Item Code	Description	
VACF-B-B2-5	8030801	12 V DC	F8
VACF-B-B2-1	8030802	24 V DC	F8
VACF-B-B2-1A	8030804	24 V AC	F8
VACF-B-B2-16B	8030806	110 V AC	F8
VACF-B-B2-3W	8030808	230/240 V AC	F8



## Plug Socket

Part Number	Item Code	Description	
MSSD-F	34431	0...250 V AC	F8



## Illuminating Seal

Part Number	Item Code	Description	
MF-LD-12-24DC	19143	12V...24V	
MF-LD-230AC	19144	230 V AC	



## Plug socket with LED connecting cable

Part Number	Item Code	Description	
KMF-1-24DC-2.5-LED	30935	24 V DC	2.5m
KMF-1-230AC-2.5	30936	230 V AC	2.5m



## Compact manifold block (pressure supply & exhaust via the manifold - PRS compact)

Part Number	Item Code	Description	Thread size/Valve Size
VABM-B10-25S-G38-2-P3	8026297	2 Bank Manifold For 3/2 Valves	G3/8-L25
VABM-B10-25S-G38-4-P3	8026299	4 Bank Manifold For 3/2 Valves	G3/8-L25
VABM-B10-25S-G38-6-P3	8026301	6 Bank Manifold For 3/2 Valves	G3/8-L25
VABM-B10-25S-G38-8-P3	8026303	8 Bank Manifold For 3/2 Valves	G3/8-L25
VABM-B10-25S-G38-10-P3	8026305	10 Bank Manifold For 3/2 Valves	G3/8-L25
VABM-B10-30S-G12-2-P3	8026413	2 Bank Manifold For 3/2 Valves	G1/2-L30
VABM-B10-30S-G12-4-P3	8026415	4 Bank Manifold For 3/2 Valves	G1/2-L30
VABM-B10-30S-G12-6-P3	8026417	6 Bank Manifold For 3/2 Valves	G1/2-L30
VABM-B10-30S-G12-8-P3	8026419	8 Bank Manifold For 3/2 Valves	G1/2-L30
VABM-B10-30S-G12-10-P3	8026421	10 Bank Manifold For 3/2 Valves	G1/2-L30
VABM-B10-25S-G38-2	8026261	2 Bank Manifold For 5/2 Valves	G3/8-L25
VABM-B10-25S-G38-4	8026263	4 Bank Manifold For 5/2 Valves	G3/8-L25
VABM-B10-25S-G38-6	8026265	6 Bank Manifold For 5/2 Valves	G3/8-L25
VABM-B10-25S-G38-8	8026267	8 Bank Manifold For 5/2 Valves	G3/8-L25
VABM-B10-25S-G38-10	8026269	10 Bank Manifold For 5/2 Valves	G3/8-L25
VABM-30-B10-30S-G12-2	8026377	2 Bank Manifold For 5/2 Valves	G1/2-L30
VABM-30-B10-30S-G12-4	8026379	4 Bank Manifold For 5/2 Valves	G1/2-L30
VABM-30-B10-30S-G12-6	8026381	6 Bank Manifold For 5/2 Valves	G1/2-L30
VABM-30-B10-30S-G12-8	8026383	8 Bank Manifold For 5/2 Valves	G1/2-L30
VABM-30-B10-30S-G12-10	8026385	10 Bank Manifold For 5/2 Valves	G1/2-L30



## Pilot Valves

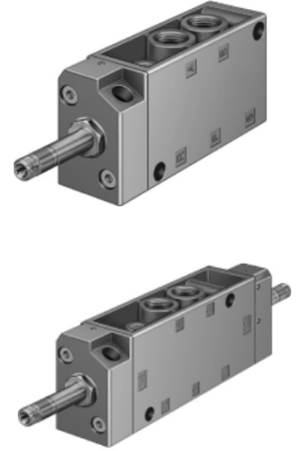
Part Number	Item Code	Description	Thread Size
VUWS-L20-M32C-M-G18	577525	3/2 Pilot Valve NC	1/8"
VUWS-L20-M32U-M-G18	575674	3/2 Pilot Valve NO	1/8"
VUWS-L25-M32C-M-G14	575485	3/2 Pilot Valve NC	1/4"
VUWS-L25-M32U-M-G14	575500	3/2 Pilot Valve NO	1/4"
VUWS-L30-M32C-M-G38	575578	3/2 Pilot Valve NC	3/8"
VUWS-L30-M32U-M-G38	575593	3/2 Pilot Valve NO	3/8"
VUWS-L20-M52-M-G18	575681	5/2 Pilot Valve	1/8"
VUWS-L25-M52-M-G14	575515	5/2 Pilot Valve	1/4"
VUWS-L30-M52-M-G38	575608	5/2 Pilot Valve	3/8"
VUWS-L20-B52-G18	575684	5/2 Double Pilot Valve	1/8"
VUWS-L25-B52-G14	575522	5/2 Double Pilot Valve	1/4"
VUWS-L30-B52-G38	575615	5/2 Double Pilot Valve	3/8"





## Tiger Series Solenoid Valves

Part Number	Item Code	Description	Thread Size
MFH-3-1/8	7802	3/2 Solenoid Valve	1/8"
MFH-3-1/4	9964	3/2 Solenoid Valve	1/4"
MFH-3-1/2	9857	3/2 Solenoid Valve	1/2"
MFH-3-3/4	11967	3/2 Solenoid Valve	3/4"
MFH-5-1/8	9982	5/2 Solenoid Valve	1/8"
MFH-5-1/4	6211	5/2 Solenoid Valve	1/4"
MFH-5-3/8-B	19705	5/2 Solenoid Valve	3/8"
MFH-5-1/2	6420	5/2 Solenoid Valve	1/2"
JMFH-5-1/8	8820	5/2 Double Solenoid Valve	1/8"
JMFH-5-1/4	10410	5/2 Double Solenoid Valve	1/4"
JMFH-5-3/8-B	19700	5/2 Double Solenoid Valve	3/8"
JMFH-5-1/2	10166	5/2 Double Solenoid Valve	1/2"
MFH-5/3G-1/8	30484	5/3 Double Solenoid Valve Centre Closed	1/8"
MFH-5/3G-1/4	19787	5/3 Double Solenoid Valve Centre Closed	1/4"
MFH-5/3G-3/8	19707	5/3 Double Solenoid Valve Centre Closed	3/8"



## Solenoid Coils

Part Number	Item Code	Description
MSFG-12	4526	Solenoid Coil 12VDC
MSFG-24/42-50/60	4527	Solenoid Coil 24VDC/42VAC
MSFW-24-50/60	4534	Solenoid Coil 24VAC
MSFW-110-50/60	6720	Solenoid Coil 110VAC
MSFW-230-50/60	4540	Solenoid Coil 230VAC
MF-LD-12-24DC	19143	Illumination Seal 12-24VDC
MF-LD-230AC	19144	Illumination Seal 230VAC



## Tiger Series Pilot Valves

Part Number	Item Code	Description	Thread Size
VL/O-3-1/8B	7803	3/2 Pilot Valve	1/8"
VL/O-3-1/4	9984	3/2 Pilot Valve	1/4"
VL/O-3-1/2	9983	3/2 Pilot Valve	1/2"
VL/O-3-3/4	10049	3/2 Pilot Valve	3/4"
VL-5-1/8	9764	5/2 Pilot Valve	1/8"
VL-5-1/4	9199	5/2 Pilot Valve	1/4"
VL-5-3/8-B	14952	5/2 Pilot Valve	3/8"
VL-5-1/2	9445	5/2 Pilot Valve	1/2"
JH-5-1/8	8823	5/2 Double Pilot Valve	1/8"
JH-5-1/4	10408	5/2 Double Pilot Valve	1/4"
JH-5-1/2	10165	5/2 Double Pilot Valve	1/2"



## Push Button Valves

Part Number	Item Code	Description	Thread Size
SV-3-M5	6817	3/2 Pilot Valve NC	M5
SVS-3-1/8	10190	3/2 Pilot Valve NC	1/8"
SVOS-3-1/8	10191	3/2 Pilot Valve NO	1/8"
SVS-4-1/8	10192	4/2 Pilot Valve	1/8"
SV-5-M5	11914	5/2 Pilot Valve	M5



## Push Button Actuators

Part Number	Item Code	Description	Size
T-22-SW	9289	Black Pushbutton	22.5mm
T-22-GE	9290	Green Pushbutton	22.5mm
T-22-RE	9997	Red Pushbutton	22.5mm
P-22-SW	9293	Black Mushroom Pushbutton	22.5mm
N-22-SW	9301	Selector Switch	22.5mm
H-22-SW	9305	Toggle Switch	22.5mm
PR-22-RT	9297	E/Stop Red	22.5mm
P-30-SW	9295	Black Mushroom Pushbutton	30mm
N-30-SW	9302	Selector Switch Maintained	30mm
PR-30-RT	9297	E/Stop Red	30mm



## Foot Pedal Valves

Part Number	Item Code	Description	Size	
F-3-1/4-B	8984	Foot Valve 3/2	1/4"	Spring Return
FP-3-1/4-B	52698	Foot Valve 3/2	1/4"	Maintained
F-5-1/4-B	8992	Foot Valve 5/2	1/4"	Spring Return
FP-5-1/4-B	526985	Foot Valve 5/2	1/4"	Maintained
FH	4500	Protective Hood		



## Hand Lever Valves

Part Number	Item Code	Description	Size	
VHEF-EST-M32-M-G14	4106807	Selector Valve 3/2	1/4"	Spring Return
VHEF-EST-B32-G14	4106815	Selector Valve 3/2	1/4"	Maintained
VHEF-ES-M52-M-G14	4106809	Selector Valve 5/2	1/4"	Spring Return
VHEF-ES-B52-G14	4106817	Selector Valve 5/2	1/4"	Maintained



Part Number	Item Code	Description	Size	
VHEF-HST-M32-M-G14	4165854	Hand Lever Valve 3/2	1/4"	Spring Return
VHEF-HST-B52-G14	4165862	Hand Lever Valve 3/2	1/4"	Maintained
VHEF-HS-M52-M-G14	4165856	Hand Lever Valve 5/2	1/4"	Spring Return
VHEF-HS-B52-G14	4165864	Hand Lever Valve 5/2	1/4"	Maintained



Part Number	Item Code	Description	Size	
VHEF-PTC-M32-M-G14	5299711	Push Button Valve 3/2	1/4"	Spring Return
VHEF-PTC-B32-G14	5299713	Push Button Valve 3/2	1/4"	Maintained
VHEF-P-M52-M-G14	5299715	Push Button Valve 5/2	1/4"	Spring Return
VHEF-P-B52-G14	5299716	Push Button Valve 5/2	1/4"	Maintained

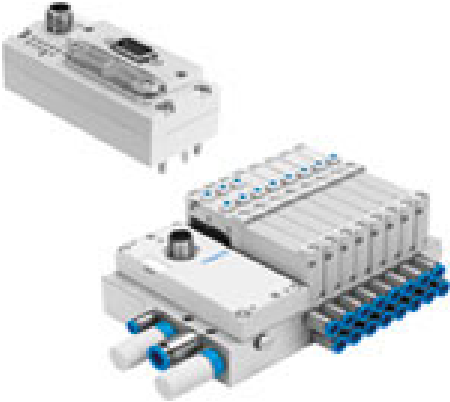


## Valve Terminal Selection

### Overview and comparison of valve terminal series from Festo

Here is an overview of the available valve terminal series with the most important technical features and recommendations for their range of applications.

#### Easy and cost-effective fixed-grid valve terminal



##### Compact with high flow rate: VTUG with plug-in

- Many electrical connection options from multi-pin plug up to fieldbus thanks to Festo I-Port
- Optimised assembly for control cabinets thanks to manifold rails for direct integration
- Electrically and pneumatically actuated valves: for vacuum applications
- Three valve sizes for flow rates of 220 up to 1300 l/min

#### Modular valve terminals with combination of valve sizes

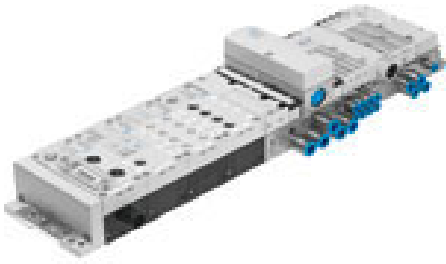


##### Expandable in individual steps: valve terminal MPA-L

- Light, cost effective and corrosion resistant thanks to polymer technology on the sub-base
- Many electrical connection options from multi-pin plug up to fieldbus thanks to Festo I-Port and CPX
- Low-cost and tamper-proof fixed restrictor, vertical pressure shut-off plate for valve replacement during operation, pressure regulator
- Three valve sizes used in combination for a flow rate of up to 850 l/min, optionally as polymer or metal version

**We can build customised solutions to suit any application. Speak with us and we can provide full CAD drawings of your designed valve terminal**

## Intelligent valve terminals with maximum possible function integration



### Excellent communication options thanks to serial linking: valve terminal MPA-S

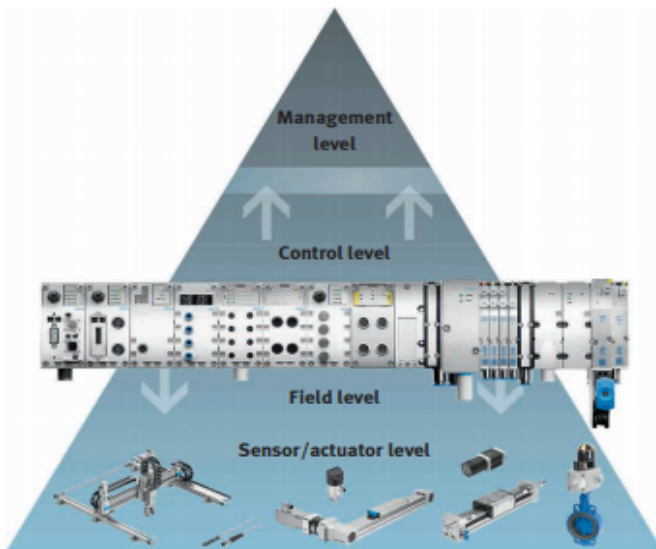
- Up to 128 valve functions / 64 valve positions
- Proportional technology and intelligent diagnostic concepts
- Pneumatic and electrical function integration
- Two valve sizes possible in combination for flow rates of 360 up to 670 l/min



### Automation platform: CPX

- Independent I/O platform
- Combinable with VTSA, MPA-S and MPA-L
- Integrated front-end control and motion control
- Many technology modules for measuring and controlling

## Electric Automation - optimised productivity in factory & process automation



### An automation platform for factory and process automation

Our CODESYS controllers, primarily the control platform CPX with protection to IP65, create unique advantages thanks to function integration and establish new standards in factory and process automation. This includes a cost-effective overall concept, technical synergies and the advantages of decentralised installation as well as connection to Industry 4.0 thanks to OPC UA.

### Competency in intelligent automation

Used by Festo: electric drive technology in core and auxiliary machine processes – from linear motion up to motion control of decentralised modules, from the simplest web-parameterised single axis up to the Multi-Carrier-System.

### Mechatronic complete solutions

Mechatronic Motion Solutions provides you with a worldwide unique system comprising components, modules, systems and software from Festo. It integrates all types of pneumatic, servo-pneumatic and (electro)mechanical automation components and combines them according to your task. Irrespective of the control environment you use, Mechatronic Motion Solutions always provides the appropriate interfaces.

## Standard-based cylindrical cylinders

Part Number	Description	Port Size	Rod Thread Size
DSNU-8-...-PPV-A (Specify Stroke Length)	Double Acting Cylinder	M5	M4
DSNU-10-...-PPV-A (Specify Stroke Length)	Double Acting Cylinder	M5	M4
DSNU-12-...-PPV-A (Specify Stroke Length)	Double Acting Cylinder	M5	M6
DSNU-16-...-PPV-A (Specify Stroke Length)	Double Acting Cylinder	M5	M6
DSNU-20-...-PPV-A (Specify Stroke Length)	Double Acting Cylinder	1/8"	M8
DSNU-25-...-PPV-A (Specify Stroke Length)	Double Acting Cylinder	1/8"	M10x1.25
DSNU-32-...-PPV-A (Specify Stroke Length)	Double Acting Cylinder	1/8"	M10x1.25
DSNU-40-...-PPV-A (Specify Stroke Length)	Double Acting Cylinder	1/4"	M12x1.25
DSNU-50-...-PPV-A (Specify Stroke Length)	Double Acting Cylinder	1/4"	M16x1.5
DSNU-63-...-PPV-A (Specify Stroke Length)	Double Acting Cylinder	3/8"	M16x1.5



## Standard-based ISO cylinders

Part Number	Description	Port Size	Rod Thread Size
DSBC-32-...-PPVA-N3 (Specify Stroke Length)	Double Acting Cylinder	1/8"	M10x1.25
DSBC-40-...-PPVA-N3 (Specify Stroke Length)	Double Acting Cylinder	1/4"	M12x1.25
DSBC-50-...-PPVA-N3 (Specify Stroke Length)	Double Acting Cylinder	1/4"	M16x1.5
DSBC-63-...-PPVA-N3 (Specify Stroke Length)	Double Acting Cylinder	3/8"	M16x1.5
DSBC-80-...-PPVA-N3 (Specify Stroke Length)	Double Acting Cylinder	3/8"	M20x1.5
DSBC-100-...-PPVA-N3 (Specify Stroke Length)	Double Acting Cylinder	1/2"	M20x1.5
DSBC-125-...-PPVA-N3 (Specify Stroke Length)	Double Acting Cylinder	1/2"	M27x2



## Standard-based tie rod cylinders

Part Number	Description	Port Size	Rod Thread Size
DSBG-32-...-PPVA-N3 (Specify Stroke Length)	Double Acting Cylinder	1/8"	M10x1.25
DSBG-40-...-PPVA-N3 (Specify Stroke Length)	Double Acting Cylinder	1/4"	M12x1.25
DSBG-50-...-PPVA-N3 (Specify Stroke Length)	Double Acting Cylinder	1/4"	M16x1.5
DSBG-63-...-PPVA-N3 (Specify Stroke Length)	Double Acting Cylinder	3/8"	M16x1.5
DSBG-80-...-PPVA-N3 (Specify Stroke Length)	Double Acting Cylinder	3/8"	M20x1.5
DSBG-100-...-PPVA-N3 (Specify Stroke Length)	Double Acting Cylinder	1/2"	M20x1.5
DSBG-125-...-PPVA-N3 (Specify Stroke Length)	Double Acting Cylinder	1/2"	M27x2
DSBG-160-...-PPVA-N3 (Specify Stroke Length)	Double Acting Cylinder	3/4"	M36x2
DSBG-200-...-PPVA-N3 (Specify Stroke Length)	Double Acting Cylinder	3/4"	M36x2
DSBG-250-...-PPVA-N3 (Specify Stroke Length)	Double Acting Cylinder	1"	M42x2
DSBG-320-...-PPVA-N3 (Specify Stroke Length)	Double Acting Cylinder	1"	M48x2



## Cylinder Proximity Sensors

Part Number	Item Code	Description
SDBT-MSX-1L-PU-E-0.3-N-M8	8059120	Proximity Sensor PNP 0,3m M8
SDBT-MSX-1L-PU-E-2.5-N-LE	8059121	Proximity Sensor PNP 2,5m 3 Wire
NEBU-M8G3-K-2.5-LE3	541333	2,5m M8 Cable
NEBU-M8G3-K-5-LE3	541334	5m M8 Cable



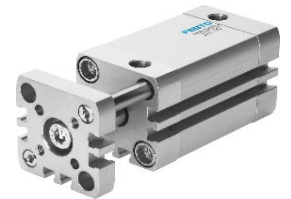
## Standard-based compact cylinders

Part Number	Description	Port Size	Rod Thread Size
ADN-12-...-A-P-A (Specify Stroke Length)	Double Acting Cylinder	M5	M5
ADN-16-...-A-P-A (Specify Stroke Length)	Double Acting Cylinder	M5	M6
ADN-20-...-A-P-A (Specify Stroke Length)	Double Acting Cylinder	M5	M8
ADN-25-...-A-P-A (Specify Stroke Length)	Double Acting Cylinder	M5	M8
ADN-32-...-A-P-A (Specify Stroke Length)	Double Acting Cylinder	1/8"	M10x1.25
ADN-40-...-A-P-A (Specify Stroke Length)	Double Acting Cylinder	1/8"	M10x1.25
ADN-50-...-A-P-A (Specify Stroke Length)	Double Acting Cylinder	1/8"	M12x1.25
ADN-63-...-A-P-A (Specify Stroke Length)	Double Acting Cylinder	1/8"	M16x1.5
ADN-80-...-A-P-A (Specify Stroke Length)	Double Acting Cylinder	1/8"	M16x1.5
ADN-100-...-A-P-A (Specify Stroke Length)	Double Acting Cylinder	1/8"	M16x1.5
ADN-125-...-A-P-A (Specify Stroke Length)	Double Acting Cylinder	1/4"	M20x1.5



## Standard-based compact cylinder non rotating

Part Number	Description	Port Size
ADN-12-...-A-P-A (Specify Stroke Length)	Double Acting Cylinder	M5
ADN-16-...-A-P-A (Specify Stroke Length)	Double Acting Cylinder	M5
ADN-20-...-A-P-A (Specify Stroke Length)	Double Acting Cylinder	M5
ADN-25-...-A-P-A (Specify Stroke Length)	Double Acting Cylinder	M5
ADN-32-...-A-P-A (Specify Stroke Length)	Double Acting Cylinder	1/8"
ADN-40-...-A-P-A (Specify Stroke Length)	Double Acting Cylinder	1/8"
ADN-50-...-A-P-A (Specify Stroke Length)	Double Acting Cylinder	1/8"
ADN-63-...-A-P-A (Specify Stroke Length)	Double Acting Cylinder	1/8"
ADN-80-...-A-P-A (Specify Stroke Length)	Double Acting Cylinder	1/8"
ADN-100-...-A-P-A (Specify Stroke Length)	Double Acting Cylinder	1/8"



## Cylinder Flow Control Valves

Part Number	Item Code	Description	Thread Size BSP	Tube Size
GRLA-M5-QS-4-RS-D	197577	Flow Control Valve	M5	4mm
GRLA-M5-QS-6-RS-D	197578	Flow Control Valve	M5	6mm
GRLA-1/8-QS-4-RS-D	197580	Flow Control Valve	1/8"	4mm
GRLA-1/8-QS-6-RS-D	197581	Flow Control Valve	1/8"	6mm
GRLA-1/4-QS-6-RS-D	534338	Flow Control Valve	1/4"	6mm
GRLA-1/4-QS-8-RS-D	534339	Flow Control Valve	1/4"	8mm
GRLA-1/4-QS-10-RS-D	534340	Flow Control Valve	1/4"	10mm
GRLA-3/8-QS-6-RS-D	534341	Flow Control Valve	3/8"	6mm
GRLA-3/8-QS-8-RS-D	534342	Flow Control Valve	3/8"	8mm
GRLA-3/8-QS-10-RS-D	534343	Flow Control Valve	3/8"	10mm
GRLA-1/2-QS-12-RS-D	534344	Flow Control Valve	1/2"	12mm



## Cylinder Pilot Check Valves

Part Number	Item Code	Description	Thread Size BSP
HGL-1/8-B	530030	Flow Control Valve	1/8"
HGL-1/4-B	530031	Flow Control Valve	1/4"
HGL-3/8-B	530032	Flow Control Valve	3/8"
HGL-1/2-B	530033	Flow Control Valve	1/2"



## Cylinder Rod Clevis

Part Number	Item Code	Description	Rod Thread Size
SG-M4	6532	Rod Clevis	M4
SG-M6	3110	Rod Clevis	M6
SG-M8	3111	Rod Clevis	M8
SG-M10x1,25	6144	Rod Clevis	M10x1.25
SG-M12x1,25	6145	Rod Clevis	M12x1.25
SG-M16x1,5	6146	Rod Clevis	M16x1.5
SG-M20x1,5	6147	Rod Clevis	M20x1.5
SG-M27x2-B	14987	Rod Clevis	M27x2
SG-M36x2	9581	Rod Clevis	M36x2
SG-M42x2	9582	Rod Clevis	M42x2
SG-M48x2	9583	Rod Clevis	M48x2



## Cylinder Rod Eye

Part Number	Item Code	Description	Rod Thread Size
SG-M4	9253	Rod Eye	M4
SG-M6	9254	Rod Eye	M6
SG-M8	9255	Rod Eye	M8
SG-M10x1,25	9261	Rod Eye	M10x1.25
SG-M12x1,25	9262	Rod Eye	M12x1.25
SG-M16x1,5	9263	Rod Eye	M16x1.5
SG-M20x1,5	9264	Rod Eye	M20x1.5
SG-M27x2	10774	Rod Eye	M27x2
SG-M36x2	10775	Rod Eye	M36x2
SG-M42x2	10776	Rod Eye	M42x2
SG-M48x2	10777	Rod Eye	M48x2



## Cylinder Rear Clevis DSNU

Part Number	Item Code	Description
LBN-8/10	6057	Rear Clevis Foot
LBN-12/16	6058	Rear Clevis Foot
LBN-20/25	6059	Rear Clevis Foot
LBN-32	195860	Rear Clevis Foot
LBN-40	195861	Rear Clevis Foot
LBN-50/63	195862	Rear Clevis Foot



## Cylinder Foot Mounts DSNU

Part Number	Item Code	Description
HBN-8/10X2	5124	Foot Mount Set
HBN-12/16X2	5126	Foot Mount Set
HBN-20/25X2	5128	Foot Mount Set
HBN-32x2	195851	Foot Mount Set
HBN-40x2	195852	Foot Mount Set
HBN-50x2	195853	Foot Mount Set
HBN-63x2	195854	Foot Mount Set



## Cylinder Rear Clevis DSBC/DSBG

Part Number	Item Code	Description
SNCB-32	174390	Rear Clevis
SNCB-40	174391	Rear Clevis
SNCB-50	174392	Rear Clevis
SNCB-63	174393	Rear Clevis
SNCB-80	174394	Rear Clevis
SNCB-100	174395	Rear Clevis
SNCB-125	174396	Rear Clevis
SNGB-160	34547	Rear Clevis
SNGB-200-B	562455	Rear Clevis
SNGB-250	157512	Rear Clevis
SNGB-320	157513	Rear Clevis



## Cylinder Swivel Flange DSBC/DSBG

Part Number	Item Code	Description
SNCL-32	174404	Rear Swivel Flange
SNCL-40	174405	Rear Swivel Flange
SNCL-50	174406	Rear Swivel Flange
SNCL-63	174407	Rear Swivel Flange
SNCL-80	174408	Rear Swivel Flange
SNCL-100	174409	Rear Swivel Flange
SNCL-125	174410	Rear Swivel Flange
SNGL-160	151534	Rear Swivel Flange
SNGL-200	151535	Rear Swivel Flange





## Cylinder Foot Mounts DSBC/DSBG

Part Number	Item Code	Description
HNC-32	174369	Foot Mount Set
HNC-40	174360	Foot Mount Set
HNC-50	174351	Foot Mount Set
HNC-63	174342	Foot Mount Set
HNC-80	174333	Foot Mount Set
HNC-100	174324	Foot Mount Set
HNC-125	174315	Foot Mount Set
HNG-160	34476	Foot Mount Set
HNG-200	34477	Foot Mount Set
HNG-250	157510	Foot Mount Set
HNG-320	157511	Foot Mount Set



# Process Valves

## NAMUR Solenoid Valve for Actuated Ball/Butterfly Valves

Part Number	Item Code	Description
VSNC-FC-M52-MD-G14-F8	577257	3/2 or 5/2 Solenoid Valve



## Solenoid coils

Part Number	Item Code	Description	Size
VACF-B-B2-5	8030801	12 V DC	F8
VACF-B-B2-1	8030802	24 V DC	F8
VACF-B-B2-3W	8030808	230/240 V AC	F8



## Plug Socket

Part Number	Item Code	Description	Size
MSSD-F	34431	0...250 V AC	F8



## Illuminating Seal

Part Number	Item Code	Description
MF-LD-12-24DC	19143	12V...24V
MF-LD-230AC	19144	230 V AC

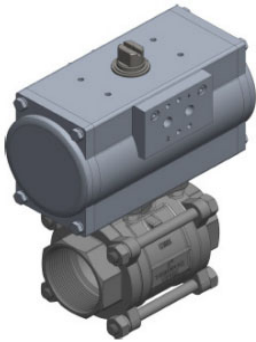


## Plug socket with LED connecting cable

Part Number	Item Code	Voltage	Size
KMF-1-24DC-2.5-LED	30935	24 V DC	2.5m
KMF-1-230AC-2.5	30936	230 V AC	2.5m



## 2-Way ball valve



### Technical data

- PTFE seats
  - SS body and ball
  - Full bore
  - 180°C max temperature
  - 90 bar max pressure\*
- \*Max pressure temperature dependent

### Features on request

- Connections: ANSI 150 Flange, Weld, Clamp
- API 607 Fire Safe - NPT Threaded
- API 607 Fire Safe - ANSI 150 Flanged
- 30°/60°/90° V-Port Balls

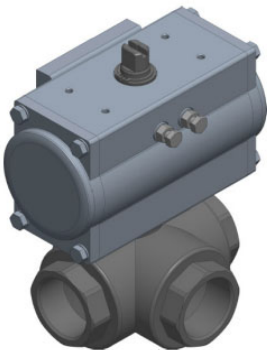
### Double acting assembly

BSP	Part No.	Ball valve actuator
1/4"	23047360	DFPD-10
3/8"	23047362	DFPD-10
1/2"	23047363	DFPD-10
3/4"	23047364	DFPD-20
1"	23047366	DFPD-20
1 1/4"	23047365	DFPD-40
1 1/2"	23047368	DFPD-40
2"	23047369	DFPD-80
2 1/2"	23047371	DFPD-80
3"	23047372	DFPD-120
4"	23047373	DFPD-240

### Single acting assembly

BSP	Part No.	Ball valve actuator
1/4"	23048069	DFPD-20-RS60
3/8"	23048058	DFPD-20-RS60
1/2"	23048060	DFPD-40-RS60
3/4"	23043963	DFPD-40-RS60
1"	23048059	DFPD-80-RS60
1 1/4"	23048061	DFPD-80-RS60
1 1/2"	23048063	DFPD-80-RS60
2"	23048064	DFPD-160-RS60
2 1/2"	23048065	DFPD-240-RS60
3"	23048066	DFPD-300-RS60
4"	23048067	DFPD-700-RS60

## 3-Way ball valve



### Technical data

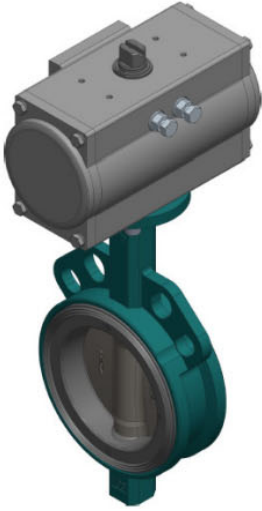
- PTFE seats
  - SS body and ball
  - Reduced bore
  - 180°C Max temperature
  - 90 bar max pressure\*
- \*Max pressure temperature dependent

### Features on request

- Connections: ANSI 150 Flanged

BSP	Sequence L-port	Part No. L-port	Sequence T-port	Part No. T-port	Ball valve actuator	
<b>Double acting assembly</b>						
1/4"		23254915		23255494	DFPD-20	
3/8"		23254917		23255495	DFPD-20	
1/2"		23254919		23255496	DFPD-20	
3/4"		23255253		23255497	DFPD-20	
1"		23255254		23255498	DFPD-40	
1 1/4"		23255255		23255499	DFPD-40	
1 1/2"		23255257		23255500	DFPD-80	
2"		23255258		23255501	DFPD-80	
2 1/2"		23047371		23258585	DFPD-80	
3"		23256836		23258588	DFPD-160	
<b>Single acting assembly</b>						
1/4"	Default	23256244	Default	23257517	DFPD-80-RS60	
3/8"		23257214		23257518	DFPD-80-RS60	
1/2"		23257215		23257519	DFPD-80-RS60	
3/4"				23257216	23257521	DFPD-80-RS60
1"		23257217		23257522	DFPD-80-RS60	
1 1/4"	Actuated	23257218	Actuated	23257523	DFPD-120-RS60	
1 1/2"		23257219		23257525	DFPD-160-RS60	
2"		23257220		23257528	DFPD-240-RS60	
2 1/2"		23258593		23258597	DFPD-240-RS60	
3"		23258601		23258606	DFPD-480-RS60	

## Butterfly valves



### Technical data

- Wafer connection Table D/E/ANSI 150
- Epoxy coated ductile iron body
- Stainless steel disc
- EPDM liner
- Pressure 10 bar

### Features on request

- Body: Stainless Steel
- Connection: Lugged Table D or E
- Liners: NBR, EPDM FDA, EPDM High Temp, PTFE
- Disc: PFA coated
- Approvals:

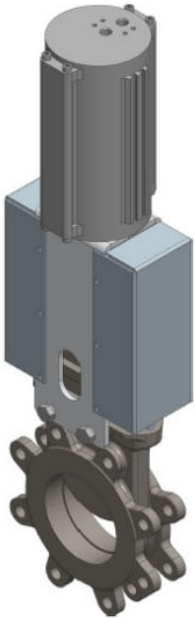
### Double acting assembly

Inch	Part No.	Butterfly valve actuator
2"	23274437	DFPD-40
2 1/2"	23274439	DFPD-40
3"	23042983	DFPD-40
4"	23042742	DFPD-80
5"	23042746	DFPD-80
6"	23042747	DFPD-120
8"	23042748	DFPD-160
10"	23274441	DFPD-240
12"	23274445	DFPD-300

### Single acting assembly

Inch	Part No.	Butterfly valve actuator
2"	23274735	DFPD-120-RS60
2 1/2"	23274738	DFPD-120-RS60
3"	23042749	DFPD-120-RS60
4"	23042750	DFPD-240-RS60
5"	23042751	DFPD-240-RS60
6"	23042753	DFPD-300-RS60
8"	23042755	DFPD-480-RS60
10"	23274741	DFPD-700-RS60
12"	23274742	DFPD-1200-RS60

## Knife gate valves



### Technical data

- Double acting actuator
- Stainless steel body and gate
- Lugged Table D connection
- Stainless steel gate
- EPDM or metal seat

### Features on request

- Connection: Lugged Table E
- Seat: NBR; FPM; PTFE
- Deflector cone
- Approvals:

### EPDM seat assembly

Inch	Part No.	Knife gate actuator
2"	15184027	DLP-80
3"	15184028	DLP-80
4"	15184029	DLP-100
6"	15184030	DLP-125
8"	15184031	DLP-160
10"	15184032	DLP-200
12"	15184033	DLP-200

### Metal seat assembly

Inch	Part No.	Knife gate actuator
2"	15184020	DLP-80
3"	15184021	DLP-80
4"	15184022	DLP-100
6"	15184023	DLP-125
8"	15184024	DLP-160
10"	15184025	DLP-200
12"	15184026	DLP-200

## VZXA - Stainless steel body / stainless steel actuator



### Technical Data

- Below seat valve – for liquids, gas, steam
- Normally Closed
- Media temperature -10...180°C
- Visual indicator

Connection	Max pressure (bar)	Part No.
G1/2"	30	8060527
G3/4"	12.8	8060528
G3/4"	30	8060529
G1"	23	8060531
G1"	30	8060532
G1"	8.3	8060530
G1 1/4"	13.5	8060534
G1 1/4"	25	8060535
G1 1/4"	4.4	8060533
G1 1/2"	16	8060537
G1 1/2"	9.3	8060536
G2"	10	8060539
G2"	5.6	8060538
G2 1/2"	5.6	8060540

### Features on request

- Function: Normally Open; Double Acting
- Temperature range -30...200°C
- Conformity: ATEX

Stroke limiter	Stroke stopper	Part No.
	No cushioning	8089993
	Shock absorber	8107369

Position feedback	Sensors	Part No.
	Not Included	8092711
	SMT-8M	8092712
	CRSMT-8M	8101084

Pilot valve	Voltage	Part No.
	24V DC	8119587

## VZXF - Brass body



### Technical Data

- Below seat valve – for liquids and gases
- Normally Closed
- Media temperature -10...80°C
- Visual indicator

Connection	Max pressure (bar)	Part No.
G1/2"	16	1002501
G3/4"	16	1002503
G1"	10	1002505
G1 1/4"	7	1002507
G1 1/2"	6	1002509
G2"	3	1002511

### Features on request

- Temperature range -40...200°C

Pilot valve	Voltage	Part No.
	24V DC	8119587

## VZWM - Diaphragm valves



### Technical data

- 2/2 monostable diaphragm valve
- Normally closed
- Pressure for liquid media 0.7...6 bar
- Pressure for gaseous media 0.7...10 bar
- Differential pressure requirement 0.5 bar
- Stainless steel and brass body
- Media temperature 5...50°C

### Features on request

- Directly actuated solenoid valve – VZWF series
- High pressure solenoid valve – VZWD series

Stainless steel body	Connection	Part No.
	G1/4"	546162
	G3/8"	546163
	G1/2"	546164
	G3/4"	546165
	G1"	546166
	G1 1/4"	546167
	G1 1/2"	546168
	G2"	546169

Brass body	Connection	Part No.
	G1/4"	546146
	G3/8"	546147
	G1/2"	546148
	G3/4"	546149
	G1"	546150
	G1 1/4"	546151
	G1 1/2"	546152
	G2"	546153

Coil for stainless steel valve		
Coil	Voltage	Part No.
	24V DC	549906
	110V AC	549907
	230V AC	549908

Coil for brass valve		
Coil	Voltage	Part No.
	24V DC	549903
	110V AC	549904
	230V AC	549905

Plug socket		
Plug	Max Voltage	Part No.
	24DC / 250AC	550067
	For all VZWM coils	

## VZQA - Pinch valves



### Technical data

- Stainless Steel body and end caps
- EPDM liner
- Pressure 0...4 bar

### Features on request

- Connections: Clamp ASME-BPE
- Body: Aluminum
- Liner: NBR / Silicone
- Approvals:

Normally open		
Clamp DIN 32676	Connection	Part No.
	DN6	2931681
	DN15	3022833
	DN25	3968924

Normally closed		
Clamp DIN 32676	Connection	Part No.
	DN6	8079857
	DN15	3412424

Normally open		
Threaded	Connection	Part No.
	G1/4"	2931678
	G1/2"	3022829
	G1"	3968922

Normally closed		
Threaded	Connection	Part No.
	G1/4"	8091739
	G1/2"	3412426

## QH & BV - Manual ball valves



### Technical data

- PTFE seals
- Suitable for water or compressed air
- -20...+180°C temperature range

### Features on request

- Temperature range -20...+250°C
- 3-way T or L port connection

### Nickel plated brass

Not lockable	Connection	Part No.
	G1/4"	9541
	G3/8"	9542
	G1/2"	9543
	G3/4"	9544
	G1"	9545
	G1 1/2"	6837

### Stainless steel

Lockable	BSP	Part No.
	1/4"	23559855
	3/8"	23559876
	1/2"	23559879
	3/4"	23559880
	1"	23559881
	1 1/4"	23559885
	1 1/2"	23559888
	2"	23559889
	3"	23559892

## PCRP - Stainless-steel filter regulator



### Technical data

- Complete stainless-steel design
- 40um filtration
- Manual drain
- Suitable for potentially explosive areas
- Pressure range 0.5...12 bar
- -20...+80°C temperature range

### Features on request

- 5um filtration grade
- -60...+80°C temperature range

PCRP-44	Connection	Part No.
	G1/4"	8120906
	G1/2"	8120904

Bracket	PCRP size	Part No.
	PCRP-44	8123058
	PCRP-64	8081356
	High-alloy stainless steel	



















PCRP-64	Connection	Part No.
	G1/4"	4787806
	G1/2"	4787814

Gauge	Indication	Part No.
	0...16 bar	8081401
	Suits PCRP 44 & 64	

### PCRP-64 assembly

Inc. dump valve	Connection	Part No.
	G1/4"	23293370
	G1/2"	23293117
	Complete assembly including PCRP-64, mounting bracket, gauge, and dump valve	

## For quarter-turn actuated assemblies

Sensor box	Part No.	Included bracket suits	Approvals	Additional bracket <sup>1)</sup>	Part No.	Additional bracket suits		
	3482805	DFPD-10...160			3636270	DFPD-240...700		
	3482807							
	3471009							
	Visual indicator <sup>2)</sup>	Part No.	Suited for actuators					
		4046082	DFPD-10...700					
		4077125	DFPD- 900...2300					
Solenoid valve	Part No.	Coil	Voltage	Plug socket	Cable	Part No.		
	577295	Included	24V DC		2.5m	30935		
						34431		
Solenoid valve	Part No.	Coil	Voltage	Part No.	Plug socket	Part No.		
	577257		12V DC	8030801		34431		
			240 V AC				8030808	
Solenoid valve	Part No.	Coil	Voltage	Part No.	Cable	Approvals		
	577267		24V DC	8029139				
			24V DC			8029143	3m	
			240V AC					8029138

1) Assemblies with actuators larger than DFPD-160 require additional bracket

2) Substitute for sensor box, visual indication ONLY



#### MELBOURNE

2/2 Sibthorpe Street  
Braeside VIC 3195  
Ph: (03) 9587 1233  
sales@remtron.com.au

#### GIPPSLAND

1/29-31 Eastern Road  
Traralgon VIC 3844  
Ph: (03) 5192 5000  
gippslandsales@remtron.com.au

#### ALBURY

444 Wilson Street  
Albury NSW 2640  
Ph: (02) 6043 8400  
alburysales@remtron.com.au

#### TASMANIA

5/2 Cessna Way Cambridge  
Hobart TAS 7170  
Ph: (03) 6422 5000  
remtronstasmania@remtron.com.au

#### ADELAIDE

22 Marlow Road  
Keswick SA 5035  
Ph: (08) 5192 5000  
sasales@remtron.com.au

#### BRISBANE

2/3273 Logan Road  
Underwood QLD 4119  
Ph: (07) 3208 7931  
qldsales@remtron.com.au

#### TOWNSVILLE

2/44-46 Carmel Street  
Garbutt QLD 4814  
Ph: (07) 4725 4499  
qldsales@remtron.com.au

[www.remtron.com.au](http://www.remtron.com.au)